

For immediate release: Dec. 18, 2018

Media contact: Andrea Foust | Membership and Public Relations Manager

Hallie Ford Museum of Art at Willamette University | 503-370-6867

Public contact: 503-370-6855 | museum-art@willamette.edu

Exhibition website: <http://willamette.edu/go/lucinda-parker>



LUCINDA PARKER: FORCE FIELDS

January 19 - March 31, 2019

Melvin Henderson-Rubio Gallery

Lucinda Parker: Force Fields

SALEM, Ore. — The Hallie Ford Museum of Art at Willamette University is pleased to present a retrospective exhibition featuring the paintings of one of Oregon’s major modern artists, Lucinda Parker (American, born 1942). “Lucinda Parker: Force Fields” has been organized by professor emeritus and senior faculty curator Roger Hull and features 38 works of art drawn from public and private collections throughout the region. The exhibition opens January 19 and continues through March 31, 2019 in the Melvin Henderson-Rubio Gallery and Maribeth Collins Lobby.

Spanning some sixty years, the exhibition follows Parker’s remarkable career: from her early paintings; to works she created as a student at the Museum Art School in Portland, Oregon; to moving through the 1970s—her breakthrough decade as a major figure in Pacific Northwest modernism. In the last decades of the twentieth century, her art took on complex references to literature, music, and mythology; while in the twenty-first century, Parker has embraced the Pacific Northwest landscape as she has turned to rendering entire mountains in a rugged, post-cubist style.

Parker’s work has been inspired by a variety of movements and while firmly rooted in the traditions of European and American modernism, she also draws from the Pacific Northwest artistic tradition where she is especially drawn to the works of C.S. Price, Charles Heaney, Louis Bunce, Mel Katz, and other artists active in Portland from the mid-century on.

Hull says, “Parker is thought of as both a grand matriarch of regional modernism as well as a key presence on the current art scene in Oregon. She is both historically significant and currently relevant.” Hull goes on to say, “Central to Lucinda Parker’s long, successful life in art-making is her acknowledgment of the accomplishments of others—past and present—together with her remarkable originality as a painter of form and color, as an inventor of bold compositions that can stagger and ultimately inspire viewers—artists and lay persons alike—who appreciate textures, energy flows, and spatial dynamics pushed to the limit on a painted surface.”

Events

A variety of complimentary exhibition related events have been planned and offer new insights into the life and times of this important and influential Oregon painter. A **Lecture with Lucinda Parker** will be held at 5 p.m. on January 19 at the Paulus Lecture Hall at the Willamette University College of Law. **Tuesday Gallery Talks** with museum docents will take place every Tuesday at 12:30 p.m. starting January 22 and continuing through March 26. **A film showing of “Lucinda Parker on Screen”** will be held February 17 between 2 and 3 p.m. at the Roger Hull Lecture Hall at the Hallie Ford Museum of Art. On March 10 Lucinda Parker will lead a **Gallery Talk** starting at 2 p.m. On March 31, the final day of the exhibition, there will be a **Gallery Chat with Lucinda Parker and Roger Hull** at 2 p.m. in the museum.

Exhibition Monograph

The exhibition monograph, “Lucinda Parker: Force Fields,” by Roger Hull, represents the first complete study of the artist and her place in American and modern art. This hardcover, 176 page book will be available for \$34.95 at the museum.

Financial Support

Financial support for this exhibition and accompanying book has been supported by a major gift from The Harold & Arlene Schnitzer CARE Foundation, and by general operating support grants from the City of Salem’s Transient Occupancy Tax funds and the Oregon Arts Commission.

###

ADDITIONAL INFORMATION

More About the Artist

Born and raised in New England, Lucinda Parker arrived in Portland, Oregon, in 1960 at the age of eighteen to enroll in the joint degree program offered by Reed College and the Museum Art School (now Pacific Northwest College of Art). In 1969, after graduate study in New York, she and her husband settled permanently in Portland, where she launched her remarkable, nearly fifty-year career that continues to this day to be richly inventive, original, and often unpredictable as she explores new forms and themes.

About the Hallie Ford Museum of Art

Oregon's third largest art museum features works by Pacific Northwest and Native American artists, and includes a diverse collection of traditional European, American and Asian art, as well as artifacts that date from antiquity. Frequently changing exhibitions include lectures, special events, tours, artist demonstrations and educational opportunities for children and adults.

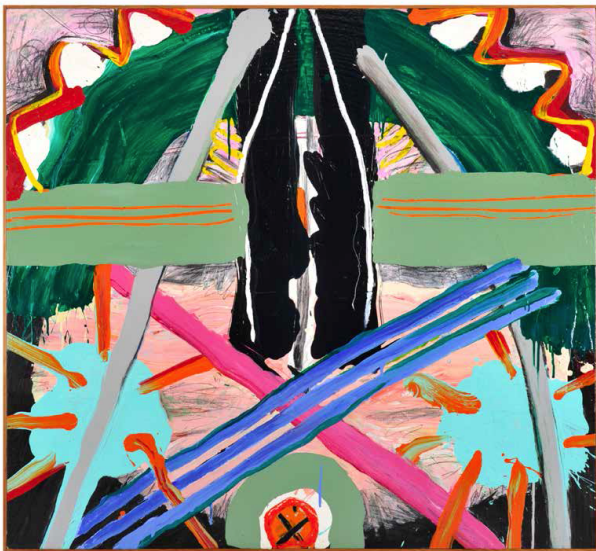
The museum is located at 700 State St. in Salem. Hours are Tuesday through Saturday from 10 a.m. to 5 p.m. and Sunday from 1 to 5 p.m. The galleries are closed on Monday. General admission is \$6, \$4 for seniors and \$3 for students 18 and older. Students 17 and under and children are admitted free. Admission is free for everyone on Tuesdays. For more information call 503-370-6855 or visit willamette.edu/go/hfma.

HIGH RESOLUTION IMAGES

Copyright Notice:

The following images posted on this page are for publicity purposes only, intended for use by journalists in media-related publications. Use of any image must be accompanied by its credit line. Use of these images by any other parties or for any other purposes, private or commercial, is strictly prohibited unless the express written consent is obtained directly from Hallie Ford Museum of Art. For information regarding educational, personal and commercial use of images, please visit our Copyrights & Reproductions page.

For assistance, contact Andrea Foust 503-370-6867 or at afoust@willamette.edu.



Lucinda Parker (American, b. 1942), "Star (in the Winner's Circle)," 1979, acrylic on canvas, 44 x 48 in., collection of the Hallie Ford Museum of Art, Willamette University, Salem, OR, Gift of Marilyn and Robert Shotola, 2008.047. Photo: Dale Peterson.

| [For A High Resolution Version Call 503-370-6867](tel:5033706867) |



Lucinda Parker (American, b. 1942), "Cantabile," 1991, acrylic on canvas and wood, 39 1/4 x 31 1/4 in., collection of the Hallie Ford Museum of Art, Willamette University, Salem, OR, The Bill Rhoades Collection, A Gift in Memory of Murna and Vay Rhoades, 2012.003.029. Photo: Dale Peterson.

| [For A High Resolution Version Call 503-370-6867](tel:503-370-6867) |



Lucinda Parker (American, b. 1942), "Waterfall at Garland Point, Putney, Vermont," 1959-1960, oil on Masonite, with modern frame (acrylic), 30 x 42 in., courtesy of the the artist. Photo: Jim Lommasson.

| [For A High Resolution Version Call 503-370-6867](tel:503-370-6867) |



Lucinda Parker (American, b. 1942), "Pea Green and Salmon," 1973, acrylic and Rhoplex on canvas (with some taping), 60 3/4 x 60 3/4 in., courtesy of the the artist and Russo Lee Gallery. Photo: Aaron Johanson.

| [For A High Resolution Version Call 503-370-6867](tel:503-370-6867) |



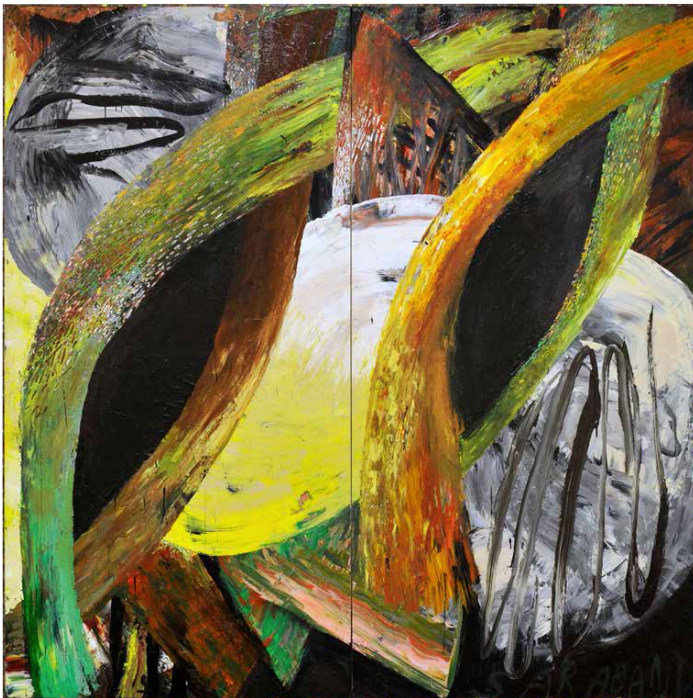
Lucinda Parker (American, b. 1942), "Cythera's Gift," 1985, acrylic on canvas, 60 x 78 in., collection of Jim and Susan Winkler. Photo: Aaron Johanson.

| [For A High Resolution Version Call 503-370-6867](tel:503-370-6867) |



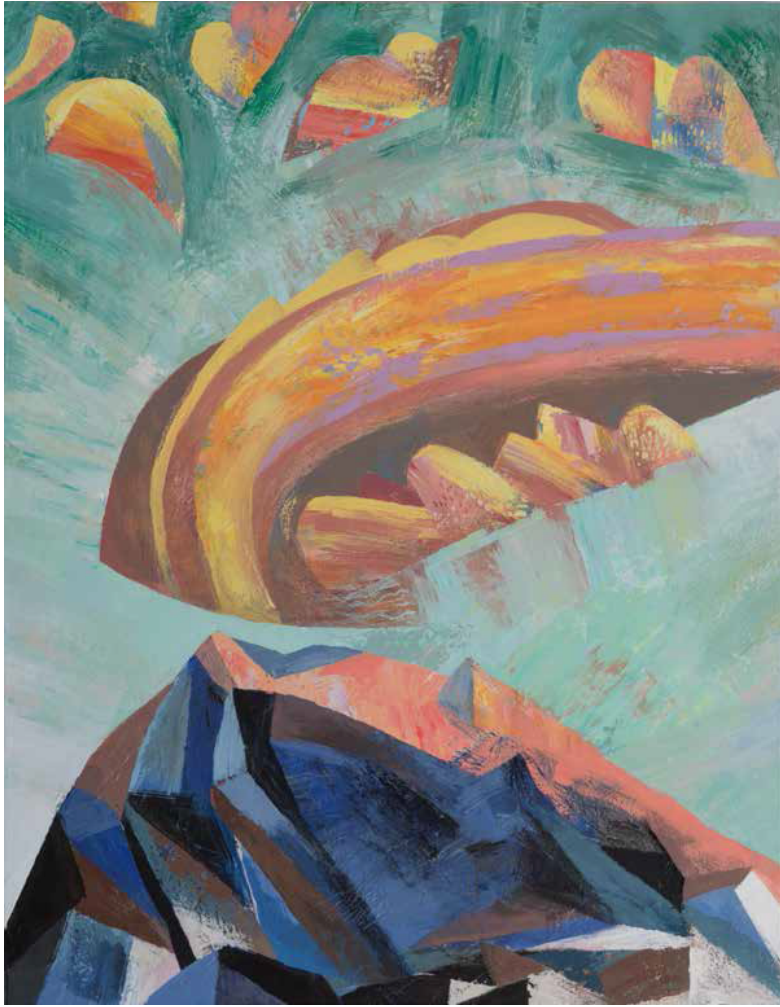
Lucinda Parker (American, b. 1942), "Sojourn," 1998, acrylic on canvas, 51 x 60 3/4 in., collection of the Hallie Ford Museum of Art, Willamette University, Salem, Oregon, gift of Frank McCullar and Mary Wells, 2010.049. Photo: Dale Peterson.

| [For A High Resolution Version Call 503-370-6867](tel:503-370-6867) |



Lucinda Parker (American, b. 1942), "Saraband," 1993, acrylic on canvas, 97 x 97 1/4 in., collection of Willamette University, Salem, OR, Maribeth Collins Art Acquisition Fund. Photo: Dale Peterson.

| [For A High Resolution Version Call 503-370-6867](tel:503-370-6867) |



Lucinda Parker (American, b. 1942), "Pinkish Lenticular," 2017, acrylic on canvas, 62 x 48 in., courtesy of the artist and Linda Hodges Gallery. Photo: Jim Lommasson.

| [For A High Resolution Version Call 503-370-6867](tel:503-370-6867) |



Lucinda Parker, 2015. Photo: K. B. Dixon

| [For A High Resolution Version Call 503-370-6867](tel:503-370-6867) |

EXHIBITION MONOGRAPH



LUCINDA PARKER FORCE FIELDS

ROGER HULL

| For A High Resolution Version Call 503-370-6867 |

“Lucinda Parker: Force Fields”

Essay © 2018 by Roger Hull

© 2018 by the Hallie Ford Museum of Art

Hardcover, full color, 176 pages; 143 color and black and white illustrations

ISBN 9781930957794

Price: \$34.95

Available at the Hallie Ford Museum of Art

A PDF COPY OF THIS BOOK IS AVAILABLE FOR REVIEW UPON REQUEST

INTERVIEW OPPORTUNITY

An interview can be arranged with Lucinda Parker and the exhibition curator Roger Hull by contacting Andrea Foust [503-370-6867](tel:503-370-6867) or at afoust@willamette.edu.