

# Hallie Ford *Museum of Art*

 WILLAMETTE UNIVERSITY

**For immediate release:** August 5, 2020

**Media contact:** Andrea Foust

Membership and Public Relations Manager

Hallie Ford Museum of Art at Willamette University | [503-370-6867](tel:503-370-6867)

**Public contact:** [503-370-6855](tel:503-370-6855) | [museum-art@willamette.edu](mailto:museum-art@willamette.edu)

**Exhibition website:** <https://willamette.edu/arts/hfma/exhibitions/library/2020-21/bonnie-hull.html>

## Salem Artist Bonnie Hull Weaves Her Memories Into Her Art



SALEM, Ore.— The Hallie Ford Museum of Art is pleased to present “Bonnie Hull: Memory as Myth,” opening August 20 and continuing through October 17, 2020 in the Study Gallery and Print Study Center. Organized by professor emeritus and guest curator Roger Hull, in collaboration with the artist, the exhibition features a diverse range of Bonnie Hull’s work from the past 35 years which have been drawn from public and private collections throughout the region, including the Salem Public Library Foundation and the Hallie Ford Museum of Art.

After four years at Michigan State studying art and art history in the 1960s, Bonnie worked for a time in the art department at Northwestern University in Illinois near her family home, and there she met Roger Hull. They married in 1969 and moved to Salem in 1970, arriving on a sunny day in June. Hence, coincidentally, her exhibition “Memory as Myth” marks the fiftieth anniversary of their rolling

into town pulling their VW bug behind a U-Haul truck and spending their first night in a motel near the “odoriferous” Boise Cascade paper mill which was located along the Salem waterfront.

“In Memory as Myth,” Bonnie Hull brings together new work in combination with examples of her earlier production, intertwining forms and ideas with her drawings, paintings, and art journals. She says, “In the studio, the ‘memories’ and the collected images begin to re-form... to take on a life of their own. This begins the myth-making... the transforming of a mundane memory of childhood swimming or summer camp, the floor of my grandfather’s sunroom, a snowstorm on Ouilmette Lane, into something that represents that memory but is not the memory itself. It is this process that has become powerful and electric. To look at a painting, a quilt, a drawing and to understand where it came from but to see a different story emerging... this becomes the goal in the making process for me.”

In addition to her art practice, Hull has been an active civic participant, conducting the research that led to the listing of the Court-Chemeketa Residential Historic District in the National Register. She co-founded and operated the Arbor Café in Salem, sat on boards and commissions, and served on committees for cultural organizations ranging from the Marion County Historical Society to the Lord and Schryver Garden Conservancy. In 2011, she and Sharon Rose curated the exhibition “Lord and Schryver: Shaping our Cultural Landscape” for the Hallie Ford Museum of Art.

Bonnie Hull had her first solo exhibition at Willamette University in 1976, at the invitation of Robert Hess, the sculptor who taught at Willamette for many years. She has had one-person shows at Bush Barn Art Center, at 12 x 16 Gallery in Portland, at various Project Space venues, and most recently at George Fox University, with her exhibition “Little Me” in 2019. Her work has also been included in numerous group exhibitions.

The exhibition is accompanied by a brochure that is available online at [willamette.edu/go/hfma-bh](http://willamette.edu/go/hfma-bh).

### **Financial Support**

Financial support for this exhibition and accompanying brochure was provided by general operating support grants from the City of Salem’s Transient Occupancy Tax funds and the Oregon Arts Commission.

###

---

### **About the Hallie Ford Museum of Art at Willamette University**

As one of the finest academic art museums in the Northwest, the museum features works by Pacific Northwest and Native American artists and includes a diverse collection of traditional European, American and Asian art, as well as artifacts that date from antiquity. Frequently changing major exhibitions range from classical to contemporary and include educational opportunities for children and adults, as well as important publications.

The museum is located at 700 State St. in Salem. Hours are Tuesday through Saturday from noon to 5 p.m. The galleries are closed on Sunday and Monday. General admission is \$6, \$4 for seniors and

\$3 for students 18 and older. Students 17 and under and children are admitted free. Admission is free for everyone on Tuesdays.

PLEASE NOTE: due to Covid-19 the museum's hours and guidelines are subject to change as federal and state guidelines evolve. Please check the museum's website for the latest information at [willamette.edu/go/hfma](http://willamette.edu/go/hfma) or call 503-370-6855.

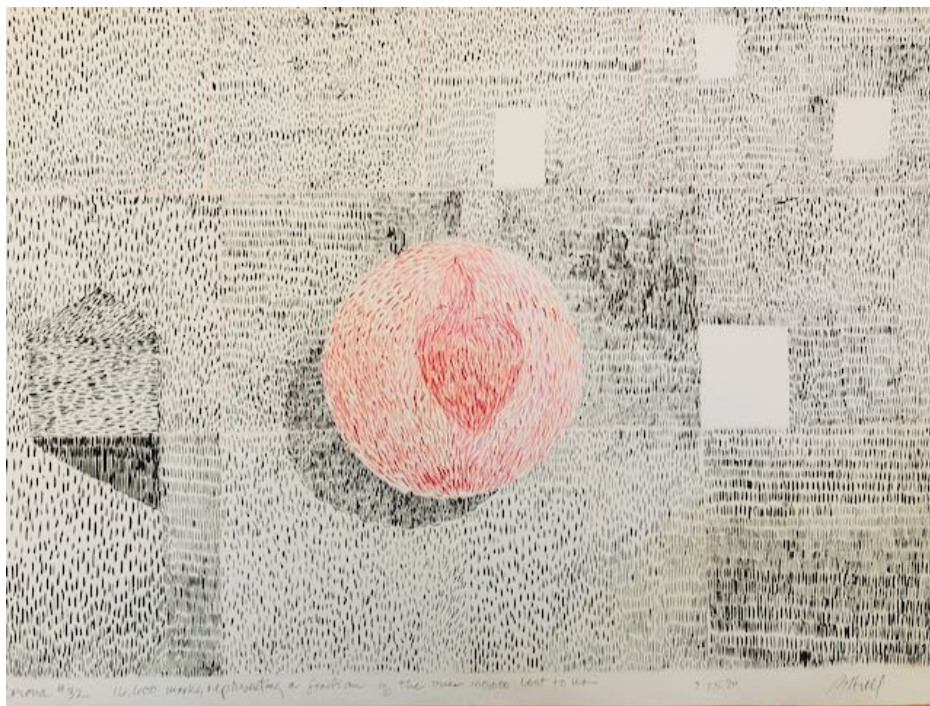
---

## HIGH-RESOLUTION IMAGES

Copyright Notice:

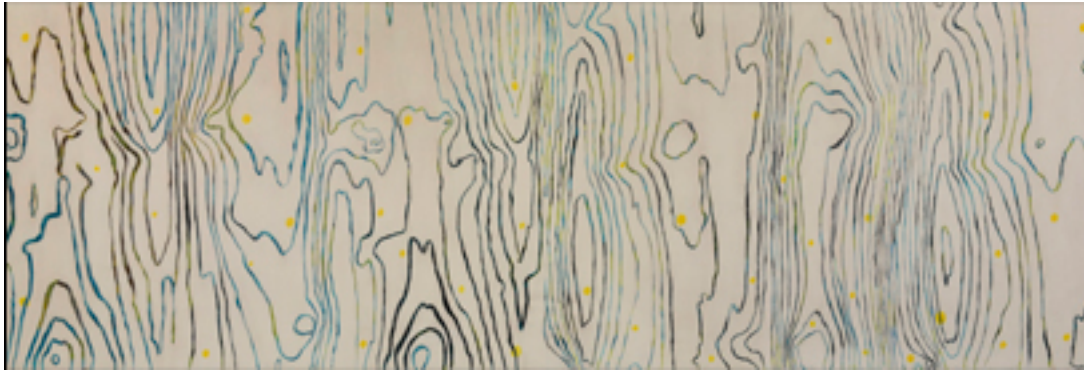
The following images posted on this page (along with the links to high-resolution versions) are for publicity purposes only, intended for use by journalists in media-related publications. Use of any image must be accompanied by its credit line. Use of these images by any other parties or for any other purposes, private or commercial, is strictly prohibited unless the express written consent is obtained directly from the Hallie Ford Museum of Art. For information regarding educational, personal, and commercial use of images, please visit our Copyrights & Reproductions page.

For assistance contact Andrea Foust [503-370-6867](tel:503-370-6867) or at [museum-art@willamette.edu](mailto:museum-art@willamette.edu).



Bonnie Hull (American, born 1944), “16,600 Marks Representing a Fraction of the Over 100,00 Lost to us,” from the “Corona Series,” May 2020, ink and colored pencil on paper, 18 x 24 in., courtesy of the artist.

| For a high-resolution image call 503-370-6867 or email [museum-art@willamette.edu](mailto:museum-art@willamette.edu) |



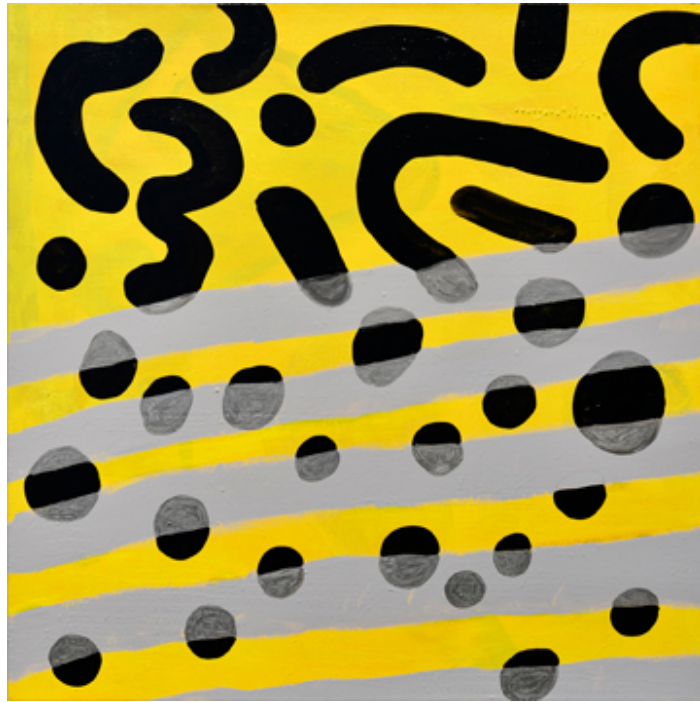
Bonnie Hull (American, born 1944), “The Long Long Hall,” 2020, acrylic on panel, 24 x 72 inches, courtesy of the artist.

| For a high-resolution image call 503-370-6867 or email [museum-art@willamette.edu](mailto:museum-art@willamette.edu) |



Bonnie Hull (American, born 1944), “The Pool,” 2019, acrylic on panel, 30 x 60 inches, courtesy of the artist.

| For a high-resolution image call 503-370-6867 or email [museum-art@willamette.edu](mailto:museum-art@willamette.edu) |



Bonnie Hull (American, born 1944), "Pop's Floor," 2019, acrylic on canvas, 30 x 30 inches, courtesy of the artist.

| For a high-resolution image call 503-370-6867 or email [museum-art@willamette.edu](mailto:museum-art@willamette.edu) |



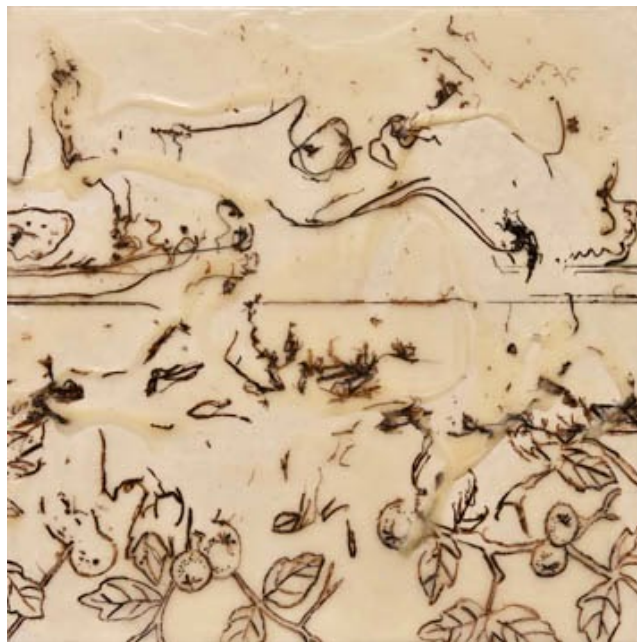
Bonnie Hull (American, born 1944), "Meadow," 2019, acrylic on panel on painted paper ground, 70 x 70 inches, courtesy of the artist.

| For a high-resolution image call 503-370-6867 or email [museum-art@willamette.edu](mailto:museum-art@willamette.edu) |



Bonnie Hull (American, born 1944), "And the Sun Still Shines," 2019, acrylic on panel, 36 x 36 inches, on painted paper ground, courtesy of the artist.

| For a high-resolution image call 503-370-6867 or email [museum-art@willamette.edu](mailto:museum-art@willamette.edu) |



Bonnie Hull (American, born 1944), "Brown and White," 2007, acrylic, ink, and wax, softened by heat gun, on panel, 12 x 12 inches, collection of the Hallie Ford Museum of Art, Willamette University, gift of the artist, 2008.005.

| For a high-resolution image call 503-370-6867 or email [museum-art@willamette.edu](mailto:museum-art@willamette.edu) |



Bonnie Hull (American, born 1944), "Mask," 1977, cast paper, gesso, stitchery, and photographs, on painted paper ground, 2019, 23.5 x 17.5 inches, courtesy of the artist.  
| For a high-resolution image call 503-370-6867 or email [museum-art@willamette.edu](mailto:museum-art@willamette.edu) |



Bonnie Hull on the roof of the San Francisco Art Institute, January 1972  
| For a high-resolution image call 503-370-6867 or email [museum-art@willamette.edu](mailto:museum-art@willamette.edu) |

**INTERVIEW OPPORTUNITY**

Interviews can be arranged with Bonnie Hull by calling [503-370-6867](tel:503-370-6867) or by email at [museum-art@willamette.edu](mailto:museum-art@willamette.edu)