

Hallie Ford *Museum of* Art



WILLAMETTE UNIVERSITY

For immediate release: April 25, 2023

Media contact: Andrea Foust

Membership and Public Relations Manager

Hallie Ford Museum of Art at Willamette University | [503-370-6867](tel:503-370-6867)

Public contact: [503-370-6855](tel:503-370-6855) | museum-art@willamette.edu

Exhibition website: www.willamette.edu/go/jim-hibbard



JIM HIBBARD: BACK IN VIEW

Oregon artist Jim Hibbard's work is "Back in View" in new exhibition

SALEM, Ore.— The Hallie Ford Museum of Art is pleased to present “Jim Hibbard: Back in View,” opening May 6 and continuing through August 12 in the Study Gallery and Print Study Center. Organized by guest curator Christy Wyckoff, the exhibition surveys the artist’s career over the past forty years with prints from the Hallie Ford Museum of Art, and the artist’s estate. The exhibition includes the artist’s better-known Portland work but also pays special attention to his later work, seen here for the first time, made during his twenty-five years in Mexico.

Hibbard (American, 1936–2022) was an influential Portland printmaker and teacher who taught at Portland State University (PSU) between 1967 and 1991. He was first known for his masterful work in

engraving, but he also utilized lithography and relief printing. It was during the late 1960s that he began to receive national recognition with purchase prizes from the Henry Art Gallery at the University of Washington in Seattle and the Cleveland Museum of Art, as well as a prestigious Louis Comfort Tiffany award, which he used to buy an etching press.

During the 1970s and '80s, Hibbard became actively involved in Portland's arts community. He was a cofounder of the longtime artist cooperative gallery Blackfish, and was a founding member of the Northwest Print Council (now Print Arts Northwest). A progressive political activist and an avid bicyclist, he participated in some of the earliest mass bike rallies in Portland, advocating for bicycling as a valid transportation option. Hibbard also hosted a radio show on Portland's KBOO during this time, where he read some of his favorite books to listeners, from "Moby Dick" to "The Teachings of Don Juan: A Yaqui Way of Knowledge."

Upon his retirement from PSU in 1991, Hibbard and his wife Jenny moved to Guanajuato, Mexico, where they established a new studio, Pirimidal Grafica, with Hugo Anaya, a friend and former student. There he continued to make prints for the next twenty-five years, working extensively in monotype, while at times combining the process with relief.

Over the years, Hibbard's work was featured in numerous solo and group exhibitions throughout the United States, and his prints can be found in the collections of the Art Institute of Chicago, the Portland Art Museum, the Jordan Schnitzer Museum of Art at the University of Oregon, and the Hallie Ford Museum of Art, among others.

The public is invited to join guest curator Christy Wyckoff for a complimentary Tuesday gallery talk exploring Hibbard's work on July 11 beginning at 12:30 p.m. in the Study Gallery and Print Study Center.

"Jim Hibbard: Back in View" has been made possible with funds from the HFMA Exhibition Fund; by advertising support from the "The Oregonian"/Oregon Live; and by general operating support grants from the City of Salem's Transient Occupancy Tax funds and the Oregon Arts Commission.

About the Hallie Ford Museum of Art at Willamette University

As one of the finest academic art museums in the Northwest, the museum features works by Pacific Northwest and Native American artists, and includes a diverse collection of traditional European, American and Asian art, as well as artifacts that date from antiquity. Frequently changing exhibitions include lectures, special events, tours, artist demonstrations, educational opportunities for children and adults, as well as important publications.

The museum is located at 700 State St. in Salem. Hours are Tuesday through Saturday from noon to 5 p.m. The galleries are closed on Sunday and Monday. General admission is \$8, \$5 for seniors; students and educators (18+ with ID), and children 17 and under are admitted free. Admission is free for everyone on Tuesdays.

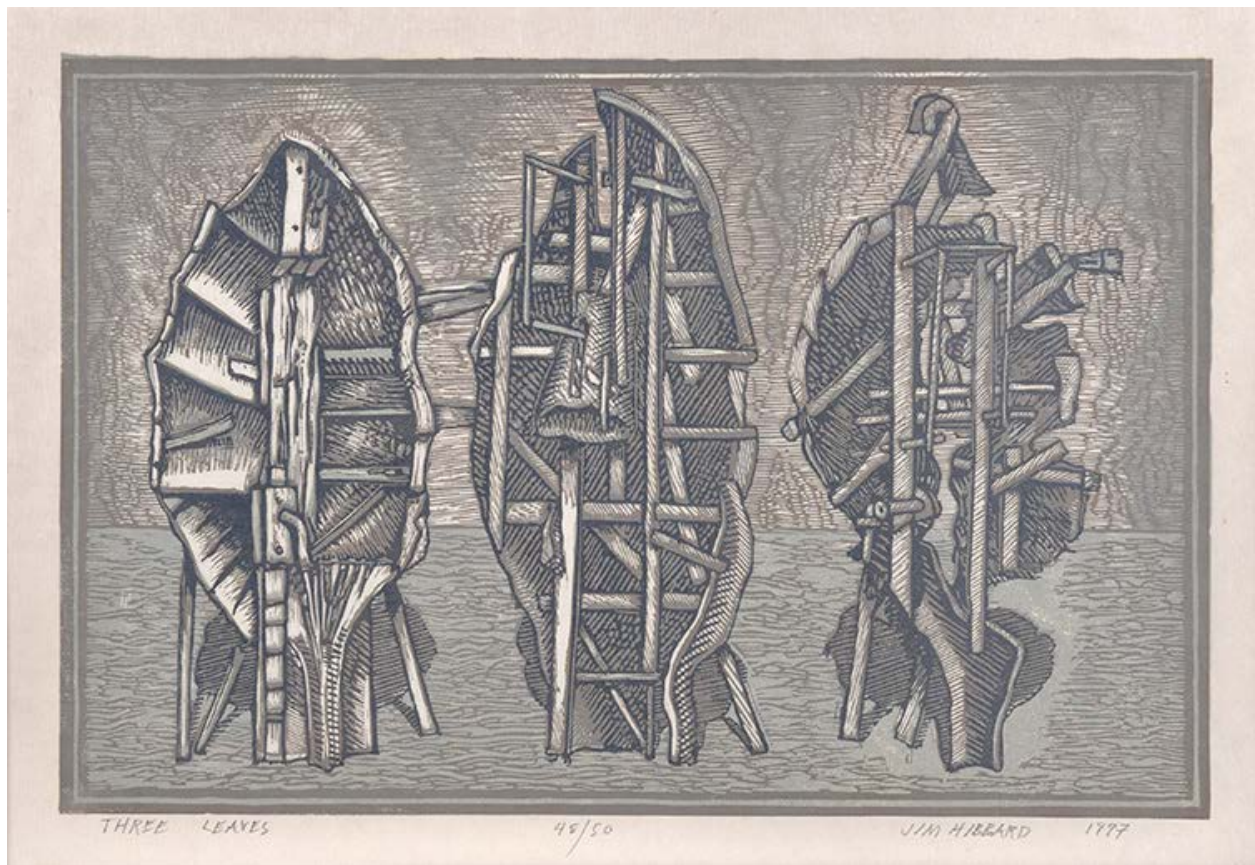
For more information call [503-370-6855](tel:503-370-6855) or visit willamette.edu/arts/hfma.

###

Available Images and Credit Lines

HIGH-RESOLUTION IMAGES Copyright Notice: The images in this press release are for publicity purposes only, intended for use by journalists in media-related publications. Use of any image must be accompanied by its credit line. Use of these images by any other parties or for any other purposes, private or commercial, is strictly prohibited unless the express written consent is obtained directly from the Hallie Ford Museum of Art. For information regarding educational, personal and commercial use of images, please visit our Copyrights & Reproductions page (<https://willamette.edu/arts/hfma/collections/copyright.html>).

For high-resolution images contact Andrea Foust at 503-370-6867 or at afoust@willamette.edu



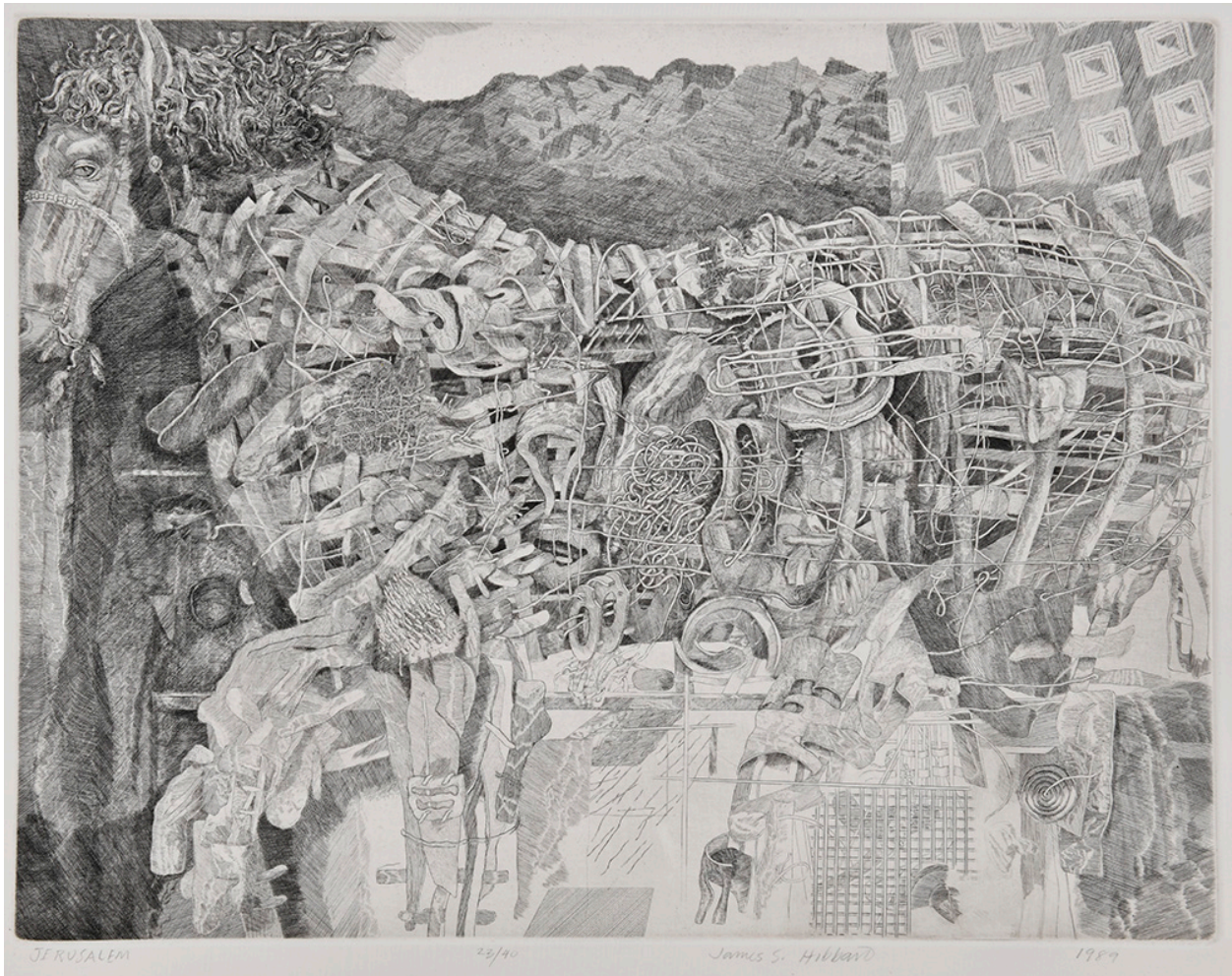
Jim Hibbard (American, 1936-2022), "Three Leaves," 1997, ed. 48/50, linocut on paper, 15.25 x 20.75 inches, collection of the Hallie Ford Museum of Art, Willamette University, Salem, OR, gift of Jack and Barbara McLarty, MCL97.017.



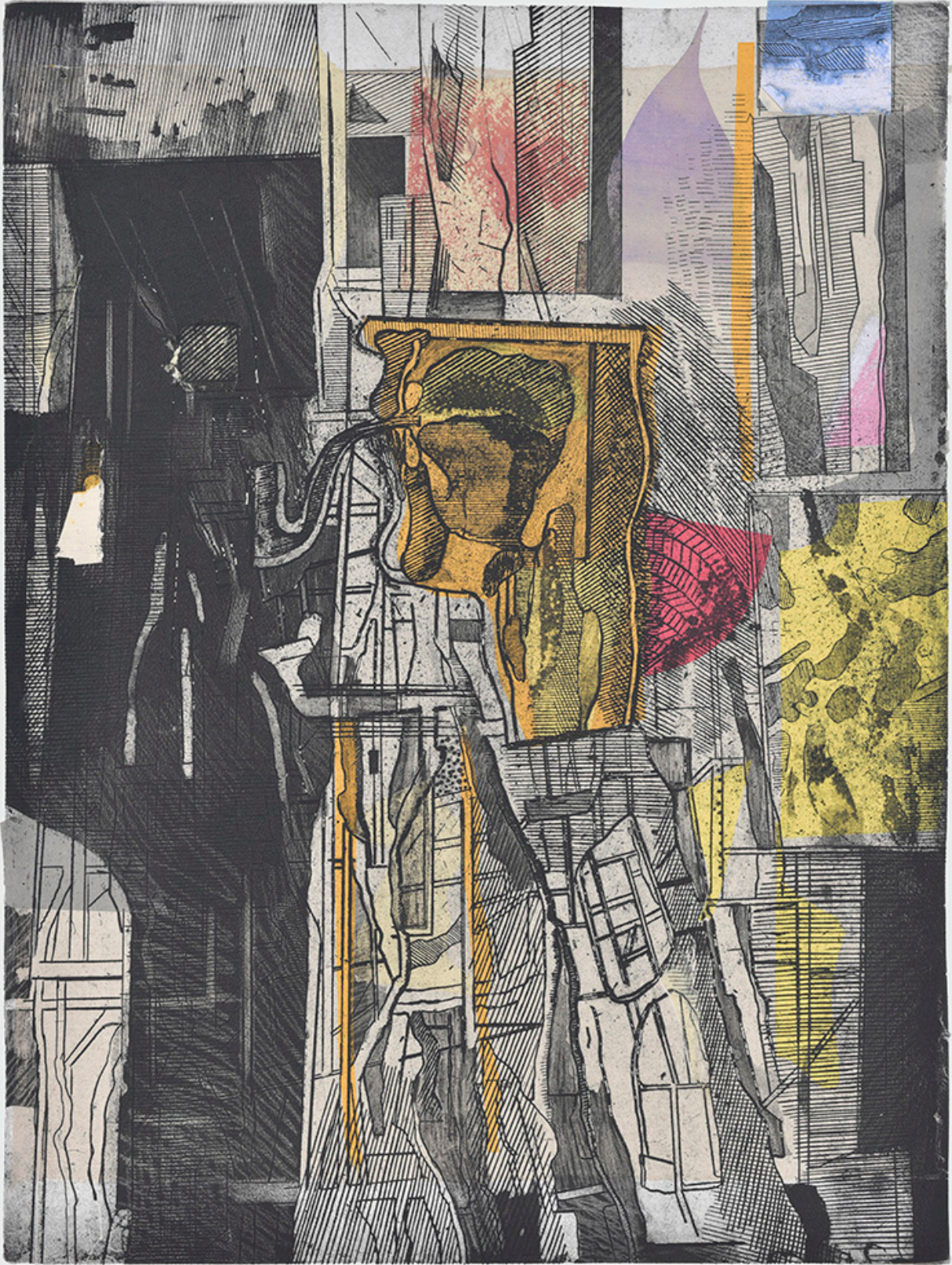
Jim Hibbard (American, 1936-2022), "Coffered Heads," 1981, water color and gouache, 29.875 x 22.125 inches, courtesy of the artist's estate.



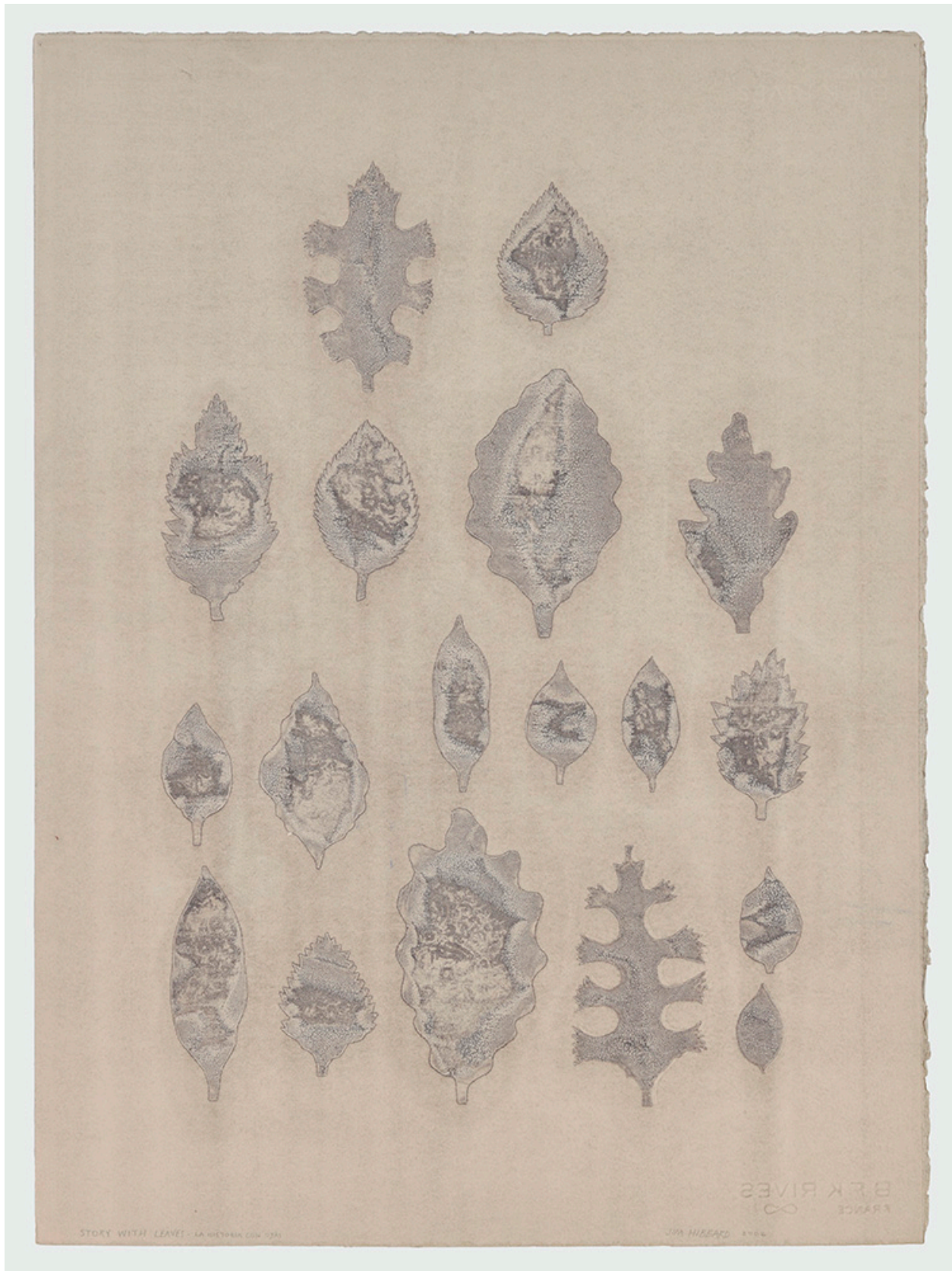
Jim Hibbard (American, 1936-2022), "Alder Leaves," 1993, ed. 9/12, collotype, 22 x 15 inches, collection of the Hallie Ford Museum of Art, Willamette University, Salem, OR, The Bill Rhoades Collection, A gift in memory of Murna and Vay Rhoades, HFMA2010.028.008.



Jim Hibbard (American, 1936-2022), "Jerusalem," 1989, ed. 23/40, engraving on paper, 12.75 x 19.25 inches, collection of the Hallie Ford Museum of Art, Willamette University, Salem, OR, gift of the artist, 2000.021.



Jim Hibbard (American, 1936-2022), Untitled, no date, proof, etching and chine collé on paper, 26.5 x 20 inches, courtesy of the artist's estate.



Jim Hibbard (American, 1936-2022), "Story with Leaves La Historia con Ojas," 2002, monotype on paper, 30.125 x 22.375 inches, collection of Betty Barton.



Jim Hibbard (American, 1936-2022), "Machines and Channels," 1988, ed. 13/16, lithograph on paper, 21.25 x 14.625 inches, courtesy of the artist's estate.

INTERVIEW OPPORTUNITY

Interviews with guest curator Christy Wyckoff can be arranged by calling [503-370-6867](tel:503-370-6867).

Christy Wyckoff is a printmaker, painter, and photographer whose work focuses on the intersection between abstraction and representation. In 2012, he retired as professor emeritus from his position as chair of the Printmaking Department at the Pacific Northwest College of Art in Portland.