

Hallie Ford *Museum of Art*

WILLAMETTE UNIVERSITY

For immediate release: January 7, 2023

Media contact: Andrea Foust

Membership and Public Relations Manager

Hallie Ford Museum of Art at Willamette University | [503-370-6867](tel:503-370-6867)

Public contact: [503-370-6855](tel:503-370-6855) | museum-art@willamette.edu

Exhibition website: <https://willamette.edu/arts/hfma/exhibitions/library/2022-23/rita-robillard.html>

Rita Robillard: Time and Place



Rita Robillard (American, born 1944), *Conflagrations and Rain*, from the series *Polarities: Patterns in Time: 1880/2016*, 2.3 Degrees Fahrenheit, 2016, screenprint on paper, 22 × 30 inches, courtesy of the artist and the Augen Gallery.

SALEM, Ore.— The Hallie Ford Museum of Art is pleased to present “Rita Robillard: Time and Place,” opening January 21, 2023 and continuing through March 25, 2023, in the museum’s Melvin Henderson-Rubio Gallery and the Maribeth Collins Lobby. Organized by Director John Olbrantz, the exhibition features 54 prints created by artist Rita Robillard (American, born 1944) during the past 40 years.

Robillard is a highly regarded Portland, Oregon, mixed-media artist. Throughout her long and prolific career, Robillard has lived in many different places, and her work over the years has explored the concept of time as well as the nature of the diverse places she has lived. Robillard was born and raised in New York City, and attended Copper Union and the University of California, Berkeley, where she received her BA and MFA degrees in fine arts. She taught at Washington State University in Pullman and Portland State University, where she chaired the art department from 1998 to 2000 and taught graduate courses until her retirement in 2013.

As art writer Linda Tesner has observed, “Robillard’s contemplation of time and place, with its historical underpinnings, is an ongoing inquiry in her work. Intensive research is part of her studio practice; she regularly investigates historical documents, photographs, and primary source accounts. Past series have explored the tension between the history of a place and its current face, accompanied by the context of human activity.”

In addition to her ongoing exploration of time and place, Robillard has continued to push the boundaries of the printmaking medium, combining printmaking techniques and photographic processes into works that challenge traditional notions of what a print is.

A full-color, ninety-six-page hardcover book accompanies this exhibition with essays by art writers Bean Gilsdorf, Frances DeVuono, Patricia Grieve Watkinson, and Linda Tesner, that provides a broad overview of the artist’s life and career.

Robillard will discuss her personal and professional journey in an illustrated lecture on January 21 in the Paulus Lecture Hall in the Willamette University College of Law and in two gallery talks on January 24 at 12:30 p.m., and March 25 at 1 p.m., at the Hallie Ford Museum of Art. Gallery talks with museum docents will also be held every Tuesday at 12:30 p.m. between January 31 and February 28, and a Saturday gallery talk on February 18 at 1 p.m.

Works from the exhibition have been drawn from public and private collections throughout the United States, including the Hallie Ford Museum of Art, the Jordan Schnitzer Museum of Art at Washington State University in Pullman, and the Portland Art Museum, among others.

This exhibition has been supported by a grant from the Ford Family Foundation; by gifts from several anonymous donors; with funds from the HFMA Exhibition Fund and the Maribeth Collins Art Exhibition Fund; by advertising support from the Oregonian/Oregon Live; and by general operating support grants from the City of Salem’s Transient Occupancy Tax funds and the Oregon Arts Commission.

About the Hallie Ford Museum of Art at Willamette University

As one of the finest academic art museums in the Northwest, the museum features works by Pacific Northwest and Native American artists, and includes a diverse collection of traditional European, American and Asian art, as well as artifacts that date from antiquity. Frequently changing exhibitions include lectures, special events, tours, artist demonstrations, educational opportunities for children and adults, as well as important publications.

The museum is located at 700 State St. in Salem. Hours are Tuesday through Saturday from noon to 5 p.m. The galleries are closed on Sunday and Monday. General admission is \$8, and \$5 for Students and educators (18+ with ID), and children 17 and under are admitted free. Admission is free for everyone on Tuesdays.

For more information call [503-370-6855](tel:503-370-6855) or visit willamette.edu/arts/hfma.

###

Available Images and Credit Lines

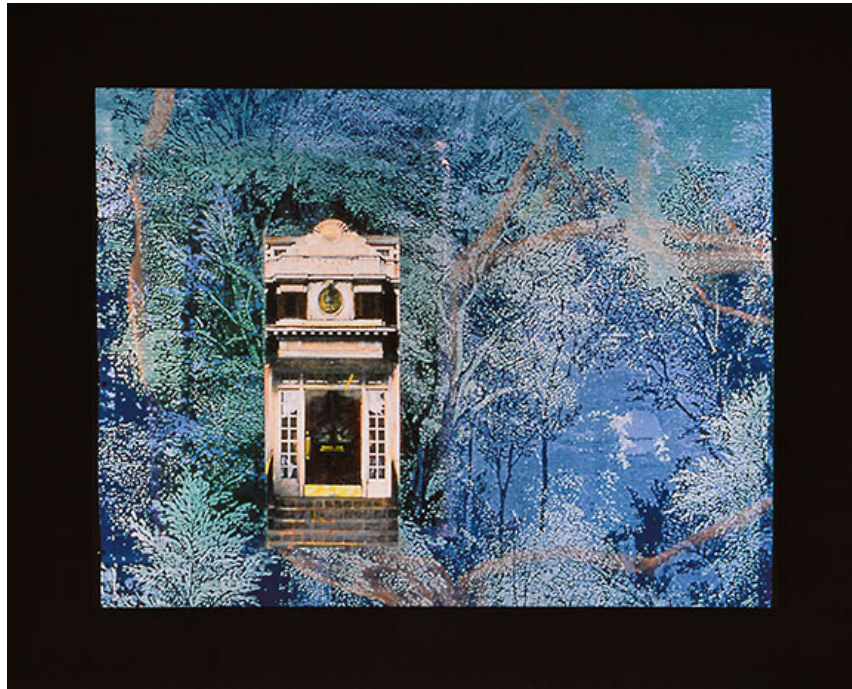
HIGH-RESOLUTION IMAGES Copyright Notice: The images in this press release are for publicity purposes only, intended for use by journalists in media-related publications. Use of any image must be accompanied by its credit line. Use of these images by any other parties or for any other purposes, private or commercial, is strictly prohibited unless the express written consent is obtained directly from the Hallie Ford Museum of Art. For information regarding educational, personal and commercial use of images, please visit our Copyrights & Reproductions page

(<https://willamette.edu/arts/hfma/collections/copyright.html>).

For high-resolution images contact Andrea Foust at 503-370-6867 or at afoust@willamette.edu



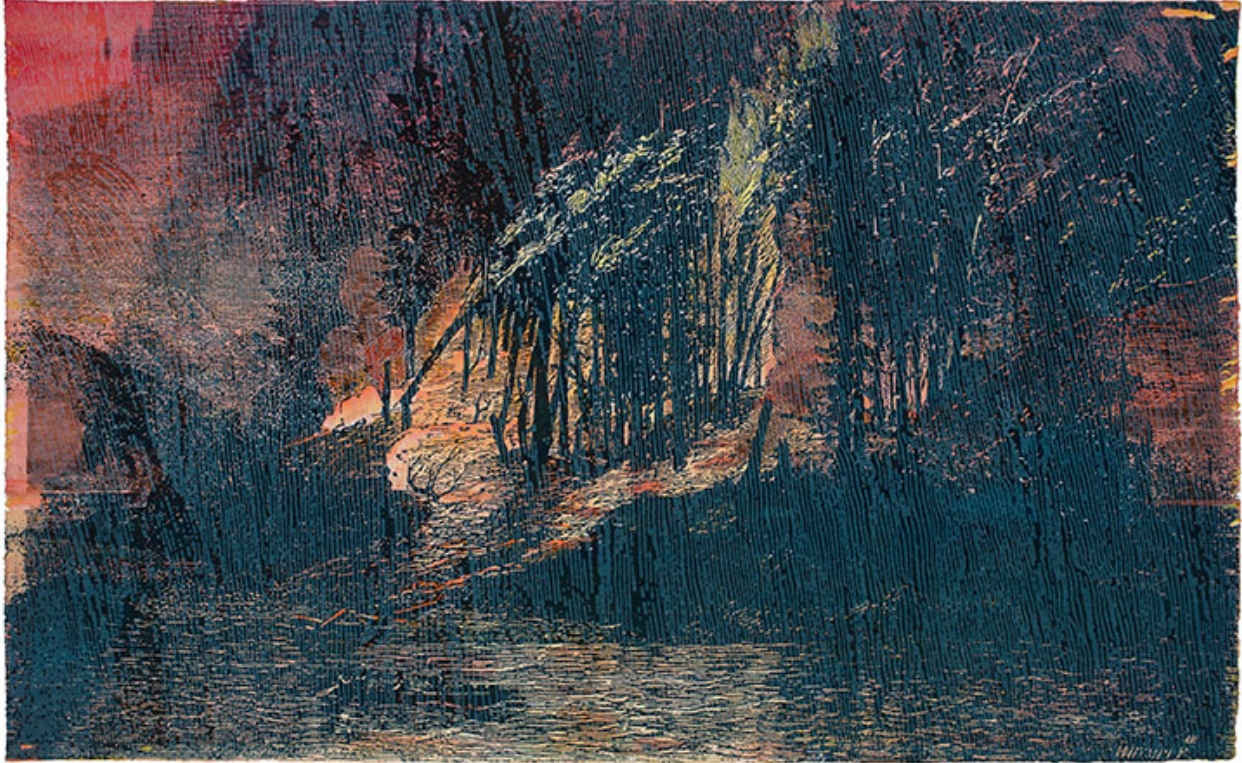
Rita Robillard (American, born 1944), *Queen of the Night I*, from the series *Flower Serenade: A Gift of Time*, 2021, screenprint and oil on panel, 18 x 18 inches, courtesy of the artist and the Augen Gallery.



Rita Robillard (American, born 1944), *Members Only*, from the series *Essence and Artifice: Views of Spokane*, 1998–2020, digital print on paper, 16 x 20 inches, collection of the artist.



Rita Robillard (American, born 1944), *Pillars: Trees in the Hills*, from the series *And Then Again: Rifts on the Forest and Time*, 2017, screenprint and acrylic on panel, four prints, 28 x 12 inches each, collection of Freda Sherburne.



Rita Robillard (American, born 1944), *Conflagrations and Rain*, from the series *Polarities: Patterns in Time: 1880/2016*, 2.3 Degrees Fahrenheit, 2016, screenprint on paper, 22 x 30 inches, courtesy of the artist and the Augen Gallery.



Rita Robillard (American, born 1944), *Dove in Space*, from the series *Luminous Frontiers*, 2007, screenprint and colored pencil on paper, 17.25 x 22 inches, courtesy of the artist and the Augen Gallery.



Rita Robillard (American, born 1944), *Heroes in the Seaweed*, from the series *Spirit Ground*, 1980, etching on mulberry paper mounted on cotton paper, 35 x 23.75 inches, collection of the artist.

INTERVIEW OPPORTUNITY

Interviews with Rita Robillard can be arranged by calling [503-370-6867](tel:503-370-6867).